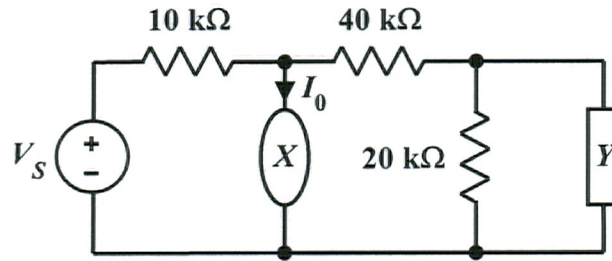


EE 2240

### Homework Problem #19

$X$  and  $Y$  are linear components. If  $I_0 = 20$  mA when  $V_S = 125$  V, what will be the new value of  $I_0$  if  $V_S$  is increased to 200 V?



$$\frac{I_0}{200\text{ V}} = \frac{20\text{ mA}}{125\text{ V}}$$

$$I_0 = 32\text{ mA}$$