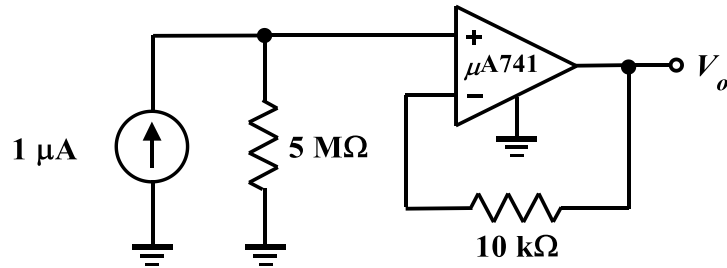


EE 2240  
**Homework Problem #45**



Use Pspice to determine the value of  $V_o$ . Use the PSpice Evaluation Library model for a  $\mu\text{A}741$  OpAmp. Submit a complete printed copy of your output file, and highlight the answer in some obvious manner. (Don't forget to put a personal identifier in the title line of your input circuit description file (also called the netlist).