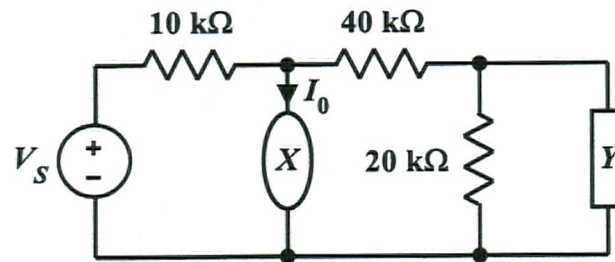


Homework Problem #07

X and Y are linear components. If $I_0 = 20$ mA when $V_S = 125$ V, what will be the new value of I_0 if V_S is increased to 200 V?



$$\frac{I_0}{200\text{V}} = \frac{20\text{mA}}{125\text{V}}$$

$$\Rightarrow I_0 = 32\text{mA}$$